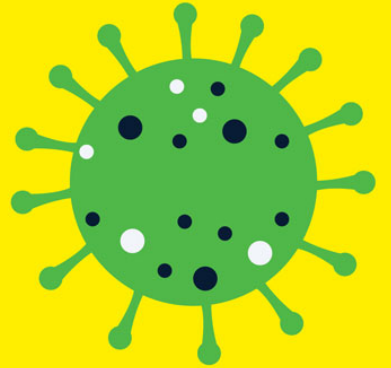


PUTTING OUT YOUR BINS

Coronavirus COVID-19



To reduce the potential for cross contamination, please follow this advice when putting out your household bins:

- Bins to be presented on the evening **before** scheduled collection
- Handles of bins to be **cleaned** with disinfectant where possible before and after presentation
- **Wipes, cloths, gloves etc.** used for cleaning can be placed in your general waste bin

If you are self-isolating / quarantine, please manage your waste in accordance with HSE guidelines

<https://www2.hse.ie/conditions/coronavirus>

mywaste.ie

